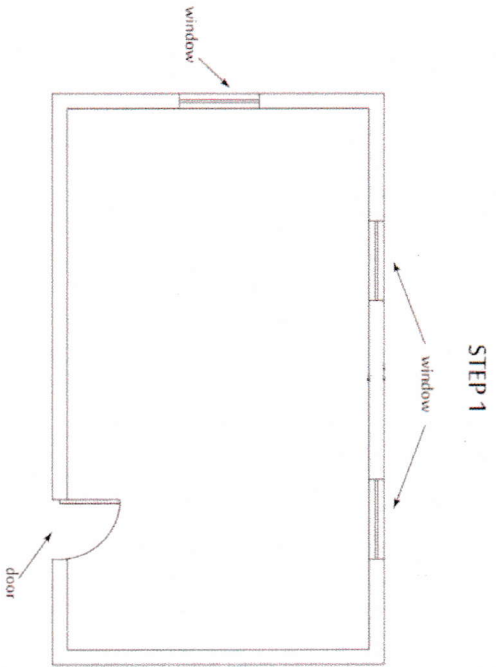


Your space is tailored for you, customized all the way through! This is why we ask you for measurements of your floor plan. Be sure to make notes of where electrical outlets are, ceiling light fixtures and any permanent fixture we will need to know about.

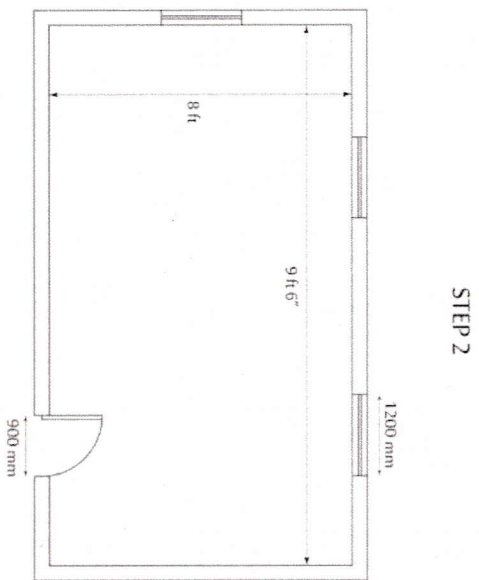
**STEP 1:**

Using a pencil, sketch out the existing layout of your room. Don't worry about scale, just be sure to note where the doors and windows are and the direction in which they open. See below example



**STEP 2:**

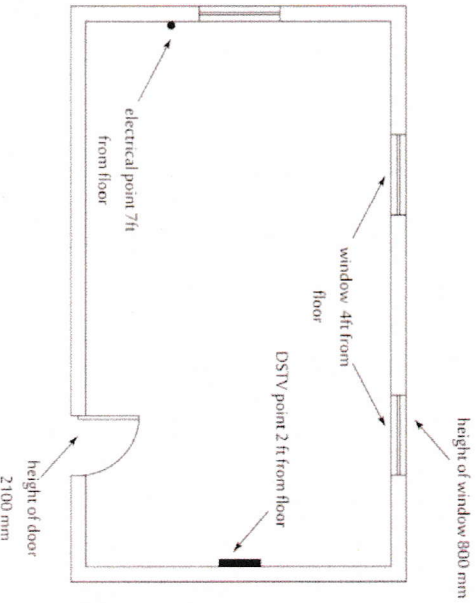
Then use a tape measure to measure each wall, corner to corner, and record the measurements.



**STEP 3:**

Next, you'll need to get the measurements of the heights

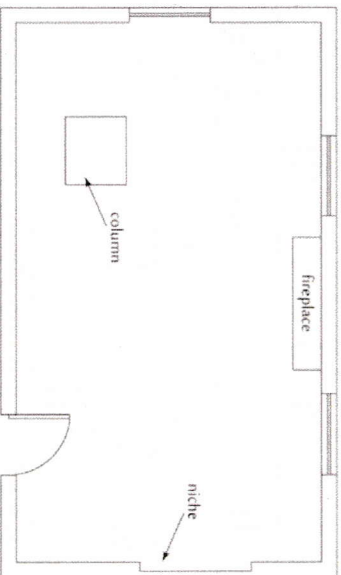
**STEP 3**



**STEP 4:**

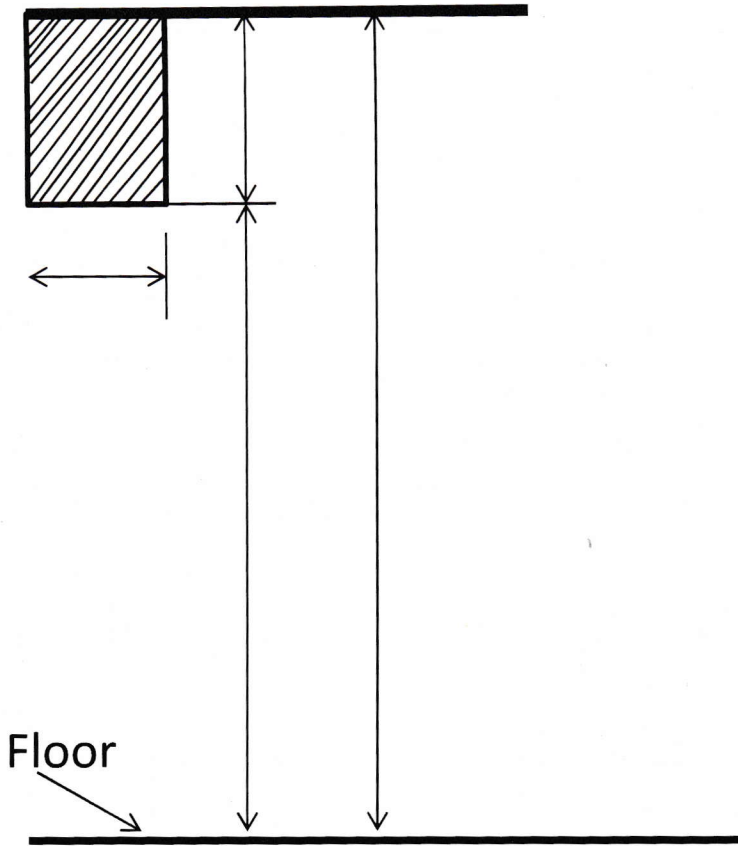
Finally, make note of any measurements from built-in objects like bookcases, fireplaces or window seats etc.

**STEP 4**



# Soffit Construction

Show on Floor Plan, Walls on Which Soffits Exist. If Height or Depth Varies, Note On Floor Plan



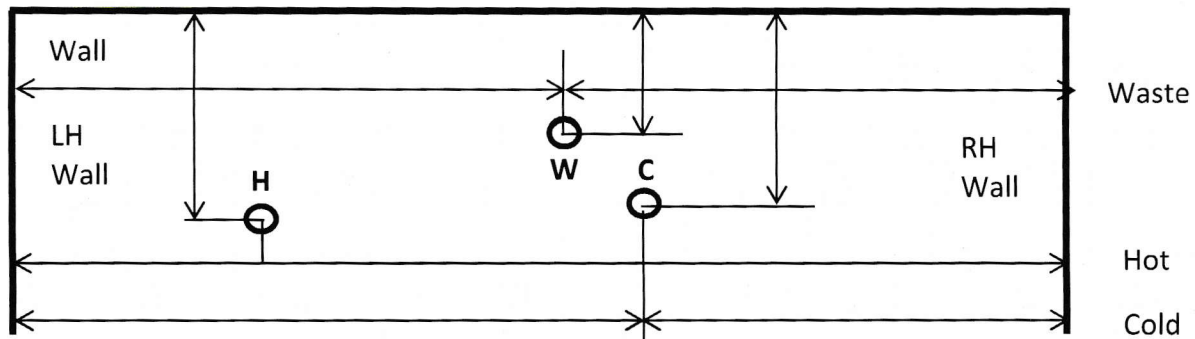
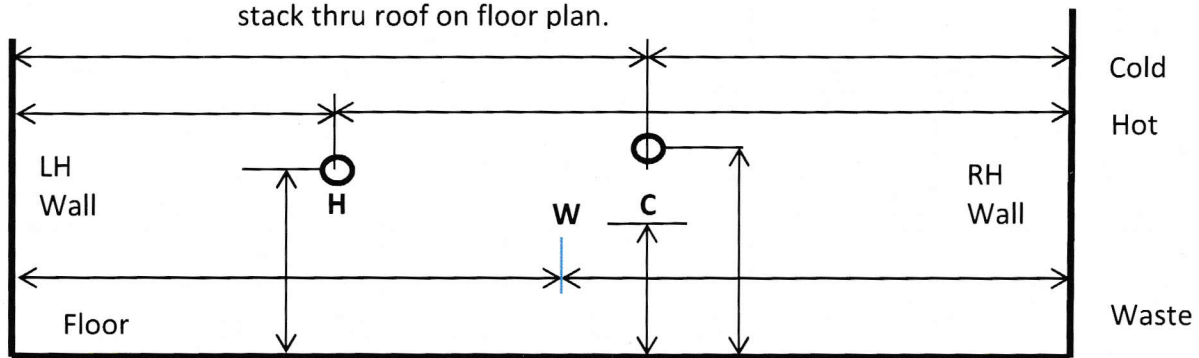
- If No Soffits Check Here
- Set Cabinets To Existing
- Remove Existing Build New
- Remove Existing No New

## Exist Soffit Construction

- Plaster
- Sheetrock
- Panel
- 

# Plumbing Locations

Show location on Existing Sink Drain On Sketch below and on floorplan. Show location of Gas piping and waste stack thru roof on floor plan.



Floor Plan View (Pipes Thru Floor)

