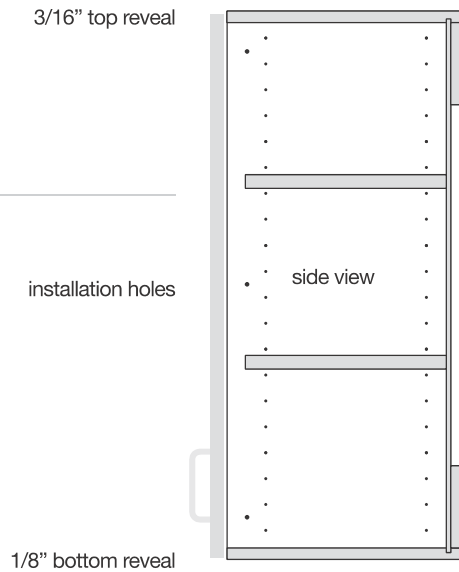


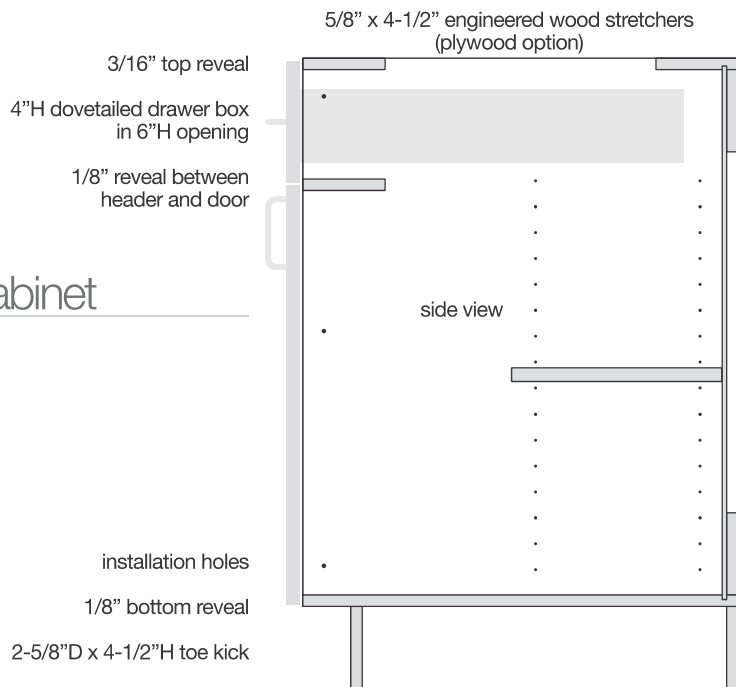
general specifications  
**construction**

wall cabinet



- wall cabinets 13" deep
- 5/8" x 4-1/2" engineered wood hanging rails (plywood option)
- 5/8" engineered wood top, bottom, ends (plywood option)
- 3/4" engineered wood shelves
- 1/4" MDF back
- 1/8" back scribe

base cabinet



- base cabinets 24" deep
- 5/8" x 4-1/2" engineered wood hanging rails (plywood option)
- 5/8" engineered wood bottom, ends (plywood option)
- 3/4" engineered wood shelves
- 1/4" MDF back
- 1/8" back scribe

## general specifications construction

<b>woods, surfaces:</b>	red oak, maple, cherry, paint grade, rustic alder, hickory, exotics, straight grain SG, foils, textures, high-gloss acrylics
<b>construction:</b>	dowel and glue cabinet construction
<b>end panels:</b>	5/8" engineered wood (plywood option)
<b>tops and bottoms:</b>	5/8" engineered wood (plywood option)
<b>backs:</b>	1/4" MDF with laminate on interior side
<b>interiors:</b>	light maple-printed laminate for stains and textures white laminate for paints white or gray laminate for acrylics and foils
<b>back scribe:</b>	1/8"
<b>hanging rail:</b>	5/8" engineered wood (plywood option)
<b>top stretcher:</b>	5/8" engineered wood (plywood option)
<b>shelving:</b>	3/4" engineered wood with light-maple printed laminate
<b>std drawer box:</b>	5/8" dovetailed birch plywood, 1/4" plywood drawer bottom with maple paper and polyurethane topcoat, edgebanded top edge
<b>upgrade drawer box:</b>	5/8" dovetailed solid wood, 1/4" plywood drawer bottom with maple paper and polyurethane topcoat
<b>drawer sides:</b>	standard drawer side height: 4", other drawer side heights: 7", 9", 11"
<b>drawer glides:</b>	Blum soft close full extension
<b>wall cabinet depth:</b>	13"
<b>edgebanding:</b>	coordinating PVC standard on all front edges veneered interior cabinets will have matching wood veneer edgebanding underside of wall cabinet end panels will have PVC edgebanding, white, gray or maple
<b>toe kick:</b>	2-5/8" deep x 4-1/2" high
<b>hinges:</b>	Blum soft close
<b>reveals:</b>	left and right: 1/16", bottom: 1/8", top: 3/16" 1/8" between header and door, 1/8" butt door gap, 1/8" between cabinets 5/16" between doors or header and door on cabinets with double floors
<b>plywood option:</b>	5/8" plywood tops, bottoms, end panels, hanging rails and stretchers, see FA.M-2
<b>upgrade interior:</b>	light-maple laminate interior for paints, see FA.M1712 gray laminate interior for paints, see FA.M1712 veneer interior, see FA.M1710
<b>upgrade legrabox:</b>	Blum LEGRABOX drawer, see FA.M1525
<b>nomenclature:</b>	Cabinets with a 2-prefix 24" to 36" wide will have butt doors and full-width drawers